

State of Wyoming Corner Record

(In compliance with the **CORNER PERPETUATION AND FILING ACT**, Wyoming Statutes, 1997 Section 33-29-140 et. seq. and the Rules and Regulations of the Board of Professional Engineers and Professional Land Surveyors)

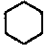

Reverse side of this form may be used if more space is needed.

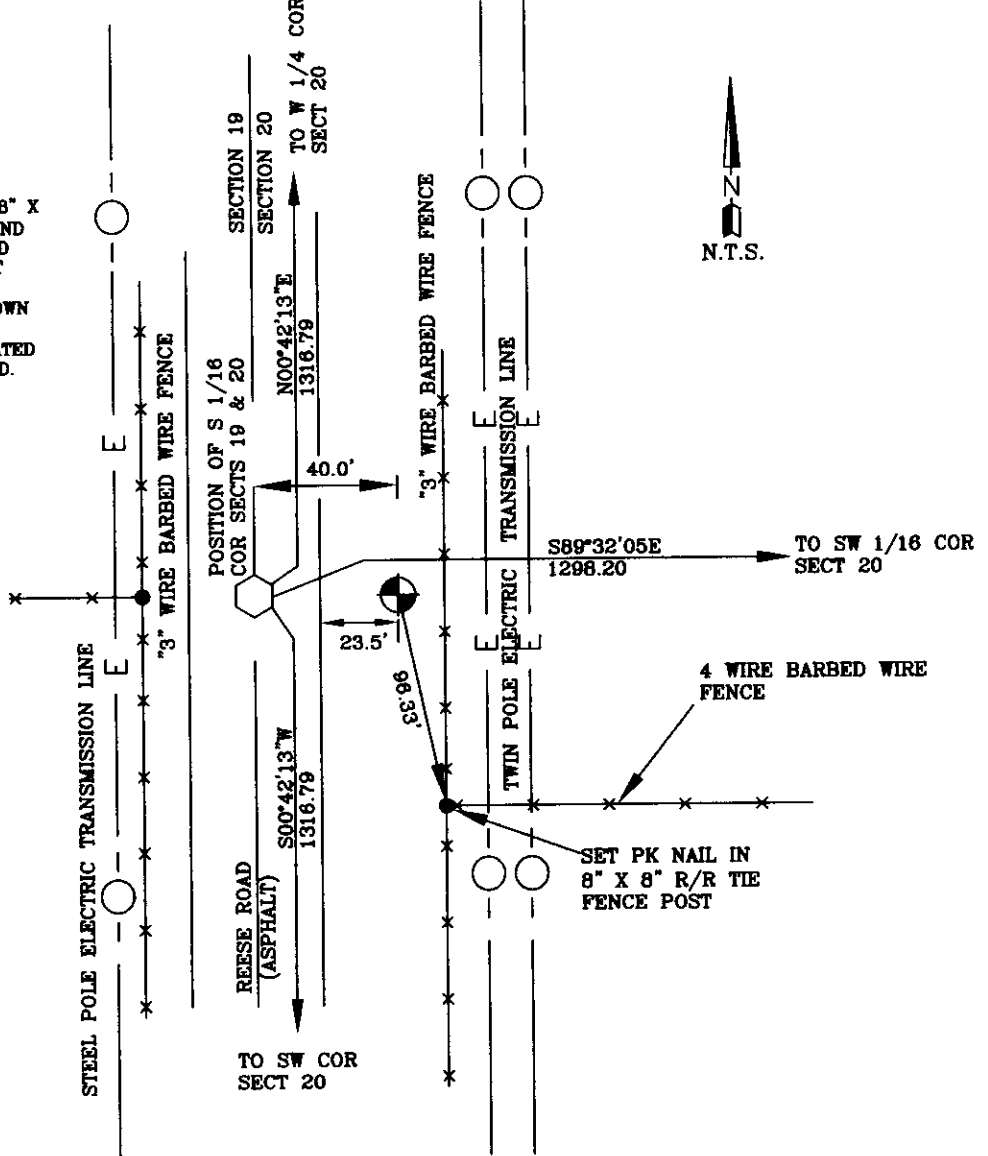
Record of original survey and citation of source of historical information (if corner is lost or obliterated). Description of corner monumentation evidence found and/or monument and accessories established to perpetuate the location of this corner. Sketch of relative location of monument, accessories, and reference points with course and distance to adjacent corner(s) (if determined in this survey). Method and rationale for reestablishment of lost or obliterated corner.

G.L.O. RECORD:
NOTHING SET

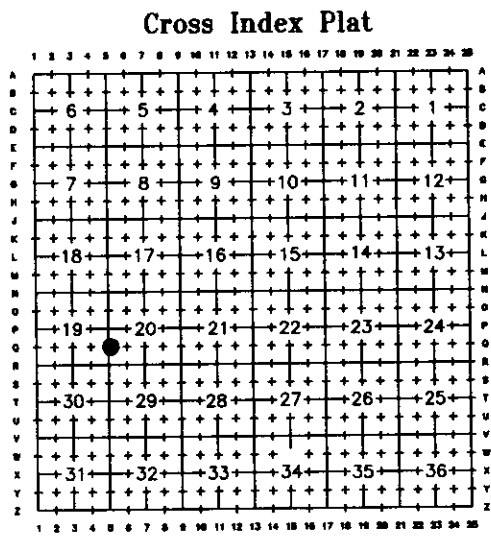
AT THE CORNER:
FOUND NOTHING
SET A 2" ALUMINUM CAP ON A 5/8" X 24" REBAR FLUSH WITH THE GROUND ON THE EAST SIDE OF REESE ROAD AT BOTTOM OF SHOULDER 40 FEET EASTERLY ON THE 1/16 LINE FOR WITNESS CORNER STAMPED AS SHOWN

SOUTH 1/16 CORNER WAS CALCULATED USING SINGLE PROPORTION METHOD. WITNESS MONUMENT WAS SET 40' EASTERLY ALONG THE 1/16 LINE BETWEEN THE SW 1/4 OF THE SW 1/4 AND THE NW 1/4 OF THE SW 1/4 OF SECTION 20

- LEGEND**
-  CALCULATED 1/16 CORNER
 -  WITNESS CORNER



Date of Field Work: 04/08/08 Office Reference: KUZMA

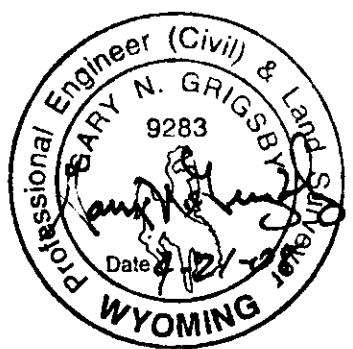
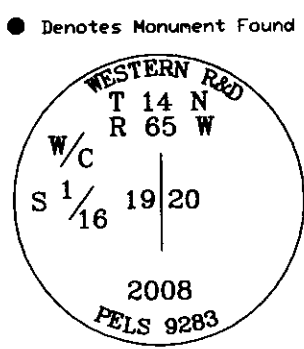


Firm/Agency, Address
Western R&D, Ltd.
5809 Yellowstone Rd., Suite B
Cheyenne, Wyoming 82009

Telephone Number: (307) 632-5656

This corner record was prepared by me or under my direction and supervision.

SEAL & SIGNATURE



Corner Name W/C SOUTH 1/16TH CORNER Sections 20 & 19, T 14 N, R 65 W, 6th P.M. Cross-Index No.: Q-5
County: LARAMIE Wyoming
SBRPEPLS/PLSW: March 1994; PLSW January 1998